

MagicTube Compact – (BCS449 S)

MagicTube compact is a surface mounted, exterior-rated and compact sized linear LED direct view luminaire that is designed for façade and outdoor architectural lighting applications.

The robust mechanical and unique optical design make it ideal for buildings facades, media facades, bridges, overpasses and any application that requires a slim linear direct view lighting solution.

Available in white, monochromatic colors, RGB, RGBW and tunable white.

Direct view spread lens, through wiring for end-to-end connection and DMX control option available with up to 12 pixels (12IDs) to give architects and designers the freedom to explore a wide range of concepts and design with no limitations.



Key Features (BCS449 S)

- Low power LEDs deliver a smooth and soft lighting distribution
- Standard: RGBW, RGB, 3000K, 4000K and tW
- Optional 2700K, 5000K, Monochromatic Colors
- Standard 300, 500 and 1000mm product lengths
- Up to 12 pixels (12IDs) for easy and flexible control
- Wide beam angle for direct view application
- Robust Design & IP66 rating for outdoor use
- Clip in mounting brackets for easy installation
- Available in DMX control option

Ordering guide

ex: *BCS449 S 72LED30K24V OCL100 12PX 15W*

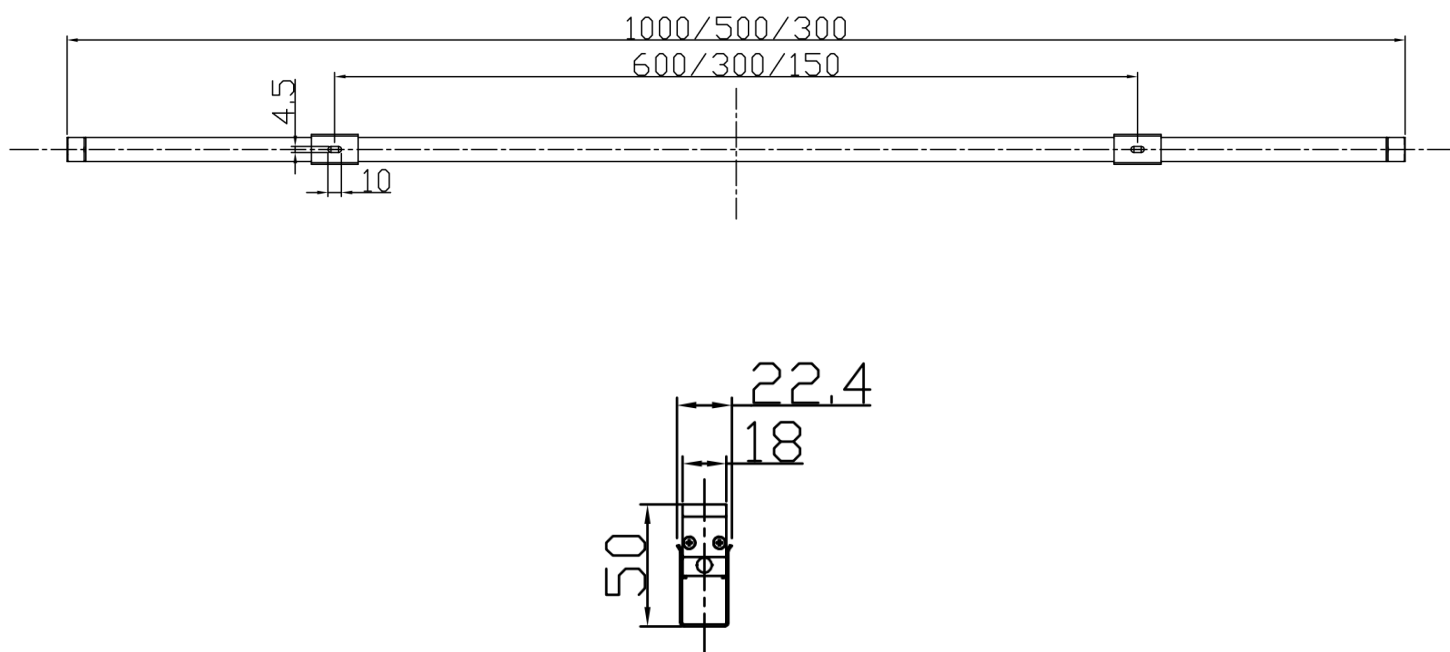
BCS449 S	LED		24V	OC	L		
Family	LEDs	CCT / Color ⁽¹⁾	Voltage	Cover Type	Length	Control/Pixels ⁽²⁾	Power
BCS449 S – MagicTube Compact	144LED	27K – 2700K	24V – 24V DC	OC – Opal Cover	L30 – 300mm	– On/Off DMX – DMX 1PX 4PX – DMX 4PX 6PX – DMX 6PX 12PX – DMX 12PX	5W
	72LED	30K – 3000K			L50 – 500mm		7.5W
	48LED	40K – 4000K			L100 – 1000mm		15W
	36LED	50K – 5000K					
	24LED	RGB – RGB tW – Tunable White BL – Blue RD – Red GN – Green AM – Amber RGB30K – RGBW(3000K) RGB40K – RGBW(4000K)					

(1) RGB, RGBW and tW are only available in DMX
 (2) For detailed pixels information, please check page 2

Product Data

Product Family	MagicTube Compact (BCS449 S)		
Dimensions (L x W x H)	300/500/1000 mm x 22.45 mm x 50 mm (with clip-in brackets)		
Source	Low power LED		
Lumen Maintenance	White: 50,000 hrs L70B50 at 35°C RGB: 50,000 hrs L50B50 @ 35°C		
Housing	Extruded aluminum		
Finishing	Electrostatically applied polyester powder coating		
Color	Dark Grey (RAL7012)		
Standard Bracket Type	Clip-in bracket		
Standard Bracket Material	Stainless steel		
Adjustability	Fixed, not adjustable		
Optical Cover	Anti-aging and anti-UV high optical efficiency PMMA opal cover (OC)		
Gasket	Silicon		
Control Interfaces	On/Off DMX512		
Input Voltage	24V DC		
Maximum Current	6A		
IEC Classification	Class III		
Power Cable (On/Off)	2 pole round cable, 2x1.0mm ² with connectors		
Power/Signal Cable (DMX)	5 pole round cable, 2x1.0mm ² + 3x0.3mm ² with connectors		
Cables Lengths	15cm		
Connectors	IP67 male/female connectors for through power+signal connection		
Lengths	300mm	500mm	1000mm
No. of LEDs (Mono/RGB)	24	36	72
No. of LEDs (RGBW/tW)	48	72	144
Power Consumption	5W	7.5W	15W
Standard No. of Pixels (IDs)	1,4	1,6	1,12
Weight	0.24 kg	0.4 kg	0.8 kg
Standard CCT/Colors	3000K, 4000K, RGB, RGBW,tW		
Standard Beam Angle (HxV)	Opal cover		
Standard White CRI	80		
White SDCM	4		
Colors Wavelengths	R: 620 to 625nm; G 525 to 530nm; B: 470 to 475nm		
Temperature Range	-40°C to 50°C (Operating) -35°C to 50°C (Startup) -40°C to 70°C (Storage)		
Protection Rating	IP66, IK06		
Certifications	CE, CB		
Warranty	3 Years		
Customization (available upon request)	Custom lengths for up to L120 RDM control (reports luminaire address and status)		

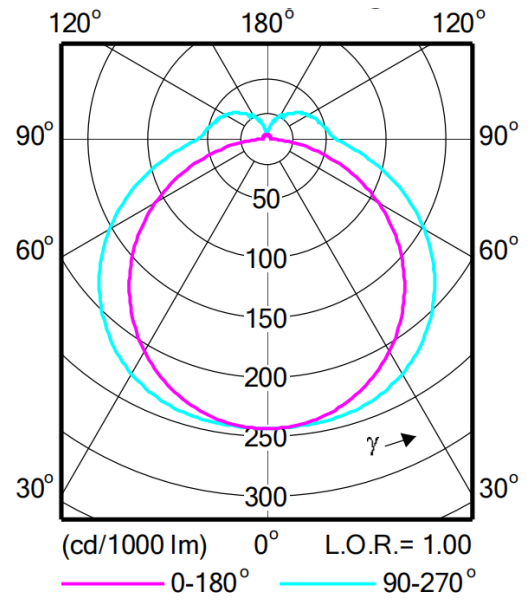
Luminaire Dimensions:



OC – Opal cover

Features:

The opal cover offers a very wide viewing angle for direct view applications that require high uniformity.



Order Information:

Description
BCS449 S 72LED30K24V OCL100 12PX 15W
BCS449 S 72LED30K24V OCL100 DMX 15W
BCS449 S 72LED30K24V OCL100 15W
BCS449 S 72LED40K24V OCL100 12PX 15W
BCS449 S 72LED40K24V OCL100 DMX 15W
BCS449 S 72LED40K24V OCL100 15W
BCS449 S 72LEDRGB24V OCL100 12PX 15W
BCS449 S 72LEDRGB24V OCL100 DMX 15W
BCS449 S 144LEDtW24V OCL100 12PX 15W
BCS449 S 144LEDtW24V OCL100 DMX 15W
BCS449 S 144LEDRGB30K24V OCL100 12PX 15W
BCS449 S 144LEDRGB30K24V OCL100 DMX 15W
BCS449 S 144LEDRGB40K24V OCL100 12PX 15W
BCS449 S 144LEDRGB40K24V OCL100 DMX 15W
BCS449 S 36LED30K24V OCL50 6PX 7.5W
BCS449 S 36LED30K24V OCL50 DMX 7.5W
BCS449 S 36LED30K24V OCL50 7.5W
BCS449 S 36LED40K24V OCL50 6PX 7.5W
BCS449 S 36LED40K24V OCL50 DMX 7.5W
BCS449 S 36LED40K24V OCL50 7.5W
BCS449 S 36LEDRGB24V OCL50 6PX 7.5W
BCS449 S 36LEDRGB24V OCL50 DMX 7.5W
BCS449 S 72LEDtW24V OCL50 6PX 7.5W
BCS449 S 72LEDtW24V OCL50 DMX 7.5W
BCS449 S 72LEDRGB30K24V OCL50 6PX 7.5W
BCS449 S 72LEDRGB30K24V OCL50 DMX 7.5W
BCS449 S 72LEDRGB40K24V OCL50 6PX 7.5W
BCS449 S 72LEDRGB40K24V OCL50 DMX 7.5W

¹Other options are available upon request

Rev. 202406

Order Information:

Description
BCS449 S 24LED30K24V OCL30 4PX 5W
BCS449 S 24LED30K24V OCL30 DMX 5W
BCS449 S 24LED30K24V OCL30 5W
BCS449 S 24LED40K24V OCL30 4PX 5W
BCS449 S 24LED40K24V OCL30 DMX 5W
BCS449 S 24LED40K24V OCL30 5W
BCS449 S 24LEDRGB24V OCL30 4PX 5W
BCS449 S 24LEDRGB24V OCL30 DMX 5W
BCS449 S 48LEDtW24V OCL30 4PX 5W
BCS449 S 48LEDtW24V OCL30 DMX 5W
BCS449 S 48LEDRGB30K24V OCL30 4PX 5W
BCS449 S 48LEDRGB30K24V OCL30 DMX 5W
BCS449 S 48LEDRGB40K24V OCL30 4PX 5W
BCS449 S 48LEDRGB40K24V OCL30 DMX 5W

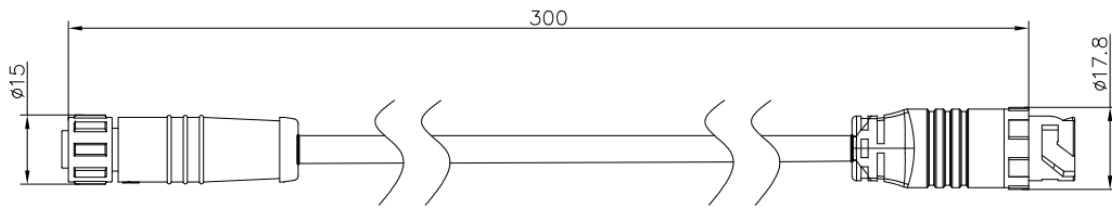
¹Other options are available upon request

Accessories:

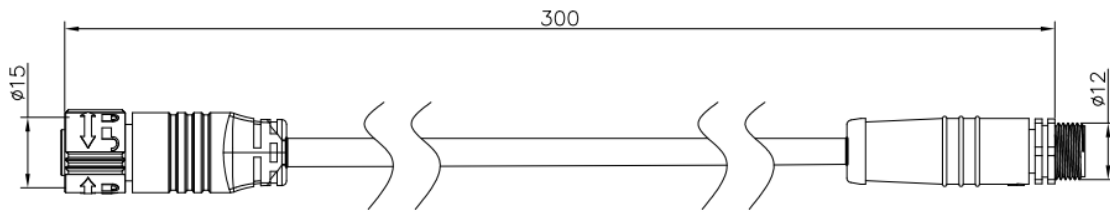
Description
ZXP390 Lead 5PDC/DMXcable 2m(10pcs)Comp
ZXP390 Jump 5PDC/DMXcable 2m(10pcs)Comp
ZXP390 Y-connectkit 5P DC/DMX(10pcs)Comp
ZXP390 5P DC/DMX convert (10pcs)Comp M
ZXP390 5P DC/DMX convert (10pcs)Comp F
ZXP390 Jump 5P DMX Connector(10pcs)Comp
ZXP390 Lead 2P DC cable 2m (10pcs)Comp
ZXP390 Jump 2P DC cable 2m (10pcs)Comp
ZXP390 Y-connect kit 2P DC(10pcs)Comp
ZXP390 endcap male connector(20pcs)Comp
ZXP390 endcap femaleconnector(20pcs)Comp

¹ Different cables lengths are available upon request

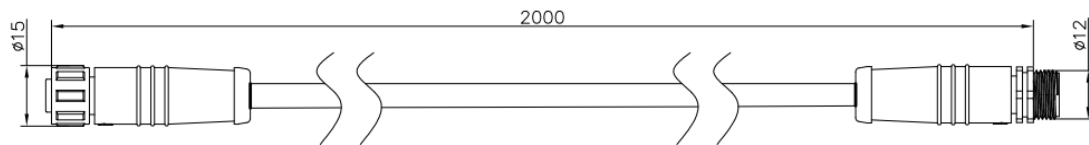
² End caps must be used at the end of each run



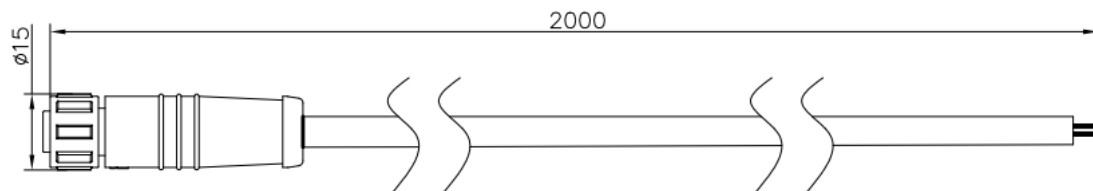
ZXP390 5P DC/DMX convert Comp F



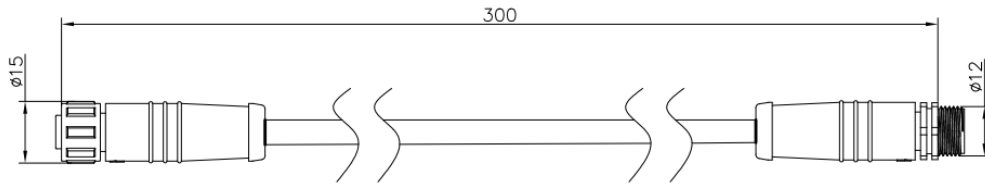
ZXP390 5P DC/DMX convert Comp M



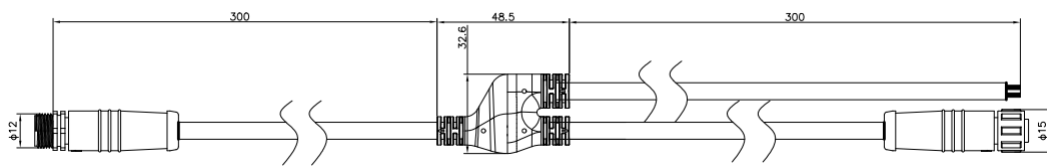
ZXP390 Jump 5PDC/DMX cable 2m Comp
ZXP390 Jump 2P DC cable 2m Comp



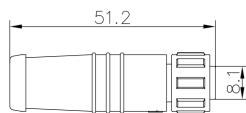
ZXP390 Lead 5PDC/DMX cable 2m Comp
ZXP390 Lead 2P DC cable 2m Comp



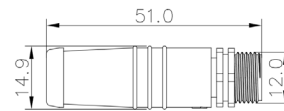
ZXP390 Jump 5P DMX Connector Comp



ZXP390 Y-connect kit



ZXP390 endcap female connector Comp



ZXP390 endcap male connector Comp

Rated System Lumen Output ($\pm 10\%$):

CCT/Color (All channels On)	L30	L50	L100
	DMX	DMX	DMX
3000K	240	360	720
4000K	255	380	765
RGB	85	150	300
RGB30K	165	250	500
RGB40K	170	260	520
tW	205	310	620

