

MagicTube Compact – (BCS449 M)

MagicTube compact is a surface mounted, exterior-rated and compact sized linear LED direct view luminaire that is designed for façade and outdoor architectural lighting applications.

The robust mechanical and unique optical design make it ideal for buildings facades, media facades, bridges, overpasses and any application that requires a slim linear direct view lighting solution.

Available in white, monochromatic colors, RGB, RGBW and tunable white.

Direct view spread lens, through wiring for end-to-end connection and DMX control option available with up to 12 pixels (12IDs) to give architects and designers the freedom to explore a wide range of concepts and design with no limitations.

Key Features (BCS449 M)



- Low power LEDs deliver a smooth and soft lighting distribution
- Standard: RGBW, RGB, 3000K, 4000K and tW
- Optional 2700K, 5000K, Monochromatic Colors
- Standard 300, 500 and 1000mm product lengths
- Up to 8 pixels (8IDs) for easy and flexible control
- Wide beam angle for direct view application
- Robust Design & IP66 rating for outdoor use
- Clip in mounting brackets for easy installation
- Available in DMX control option

Ordering guide

ex: *BCS449 M 48LED30K24V OCL100 8PX 12W*

BCS449 M	LED		24V	OC	L		
Family	LEDs	CCT / Color ⁽¹⁾	Voltage	Cover Type	Length	Control/Pixels ⁽²⁾	Power
BCS449 M – MagicTube Compact	96LED	27K – 2700K	24V –	OC – Opal	L30 – 300mm	– On/Off	3W
	48LED	30K – 3000K	24V DC	Cover	L50 – 500mm	DMX – DMX 1PX	6W
	24LED	40K – 4000K			L100 – 1000mm	2PX – DMX 2PX	12W
	12LED	50K – 5000K				4PX – DMX 4PX	
		RGB – RGB				8PX – DMX 8PX	
		tW – Tunable White					
		BL – Blue					
		RD – Red					
		GN – Green					
		AM – Amber					
		RGB30K – RGBW(3000K)					
		RGB40K – RGBW(4000K)					

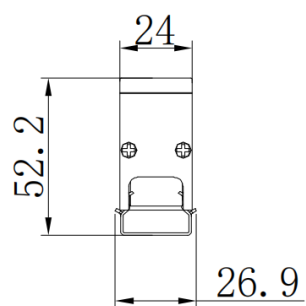
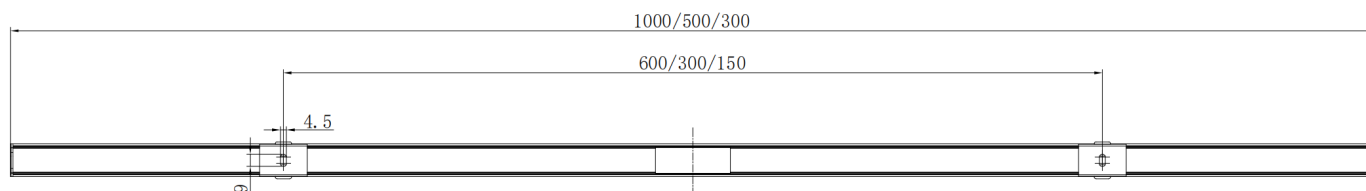
(1) RGB, RGBW and tW are only available in DMX

(2) For detailed pixels information, please check page 2

Product Data

Product Family	MagicTube Compact (BCS449 M)		
Dimensions (L x W x H)	300/500/1000 mm x 26.9 mm x 52.2 mm (with clip-in brackets)		
Source	Low power LED		
Lumen Maintenance	White: 50,000 hrs L70B50 at 35°C RGB: 50,000 hrs L50B50 @ 35°C		
Housing	Extruded aluminum		
Finishing	Electrostatically applied polyester powder coating		
Color	Dark Grey (RAL7012)		
Standard Bracket Type	Clip-in bracket		
Standard Bracket Material	Stainless steel		
Adjustability	Fixed, not adjustable		
Optical Cover	Anti-aging and anti-UV high optical efficiency PMMA opal cover (OC)		
Gasket	Silicon		
Control Interfaces	On/Off DMX512		
Input Voltage	24V DC		
Maximum Current	6A		
IEC Classification	Class III		
Power Cable (On/Off)	2 pole round cable, 2x1.0mm ² with connectors		
Power/Signal Cable (DMX)	5 pole round cable, 2x1.0mm ² + 3x0.3mm ² with connectors		
Cables Lengths	15cm		
Connectors	IP67 male/female connectors for through power+signal connection		
Lengths	300mm	500mm	1000mm
No. of LEDs (Mono/RGB)	12	24	48
No. of LEDs (RGBW/tW)	24	48	96
Power Consumption	3W	6W	12W
Standard No. of Pixels (IDs)	1,2	1,4	1,8
Weight	0.4 kg	0.65 kg	1.3 kg
Standard CCT/Colors	3000K, 4000K, RGB, RGBW,tW		
Standard Beam Angle (HxV)	Opal cover		
Standard White CRI	80		
White SDCM	4		
Colors Wavelengths	R: 620 to 625nm; G 525 to 530nm; B: 470 to 475nm		
Temperature Range	-40°C to 50°C (Operating) -35°C to 50°C (Startup) -40°C to 70°C (Storage)		
Protection Rating	IP66, IK06		
Certifications	CE, CB		
Warranty	3 Years		
Customization (available upon request)	Custom lengths for up to L120 RDM control (reports luminaire address and status)		

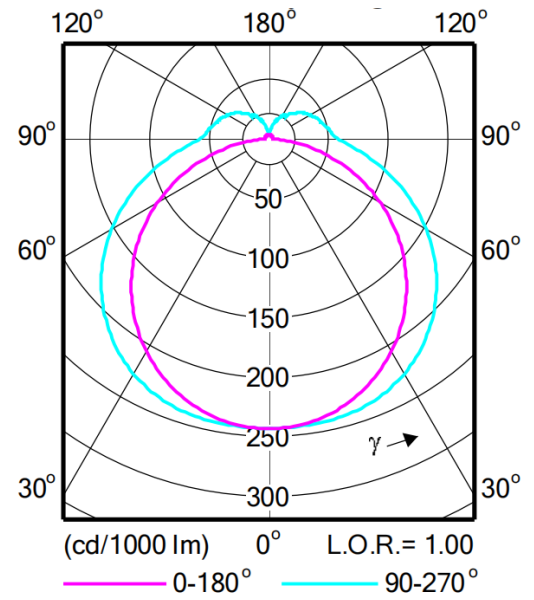
Luminaire Dimensions:



OC – Opal cover

Features:

The opal cover offers a very wide viewing angle for direct view applications that require high uniformity.



Order Information:

Description
BCS449 M 48LED30K24V OCL100 8PX 12W
BCS449 M 48LED30K24V OCL100 DMX 12W
BCS449 M 48LED30K24V OCL100 12W
BCS449 M 48LED40K24V OCL100 8PX 12W
BCS449 M 48LED40K24V OCL100 DMX 12W
BCS449 M 48LED40K24V OCL100 12W
BCS449 M 48LEDRGB24V OCL100 8PX 12W
BCS449 M 48LEDRGB24V OCL100 DMX 12W
BCS449 M 96EDRGB30K24V OCL100 8PX 12W
BCS449 M 96EDRGB30K24V OCL100 DMX 12W
BCS449 M 96EDRGB40K24V OCL100 8PX 12W
BCS449 M 96EDRGB40K24V OCL100 DMX 12W
BCS449 M 96EDtW24V OCL100 8PX 12W
BCS449 M 96EDtW24V OCL100 DMX 12W
BCS449 M 24LED30K24V OCL50 4PX 6W
BCS449 M 24LED30K24V OCL50 DMX 6W
BCS449 M 24LED30K24V OCL50 6W
BCS449 M 24LED40K24V OCL50 4PX 6W
BCS449 M 24LED40K24V OCL50 DMX 6W
BCS449 M 24LED40K24V OCL50 6W
BCS449 M 24LEDRGB24V OCL50 4PX 6W
BCS449 M 24LEDRGB24V OCL50 DMX 6W
BCS449 M 48EDRGB30K24V OCL50 4PX 6W
BCS449 M 48EDRGB30K24V OCL50 DMX 6W
BCS449 M 48EDRGB40K24V OCL50 4PX 6W
BCS449 M 48EDRGB40K24V OCL50 DMX 6W
BCS449 M 48EDtW24V OCL50 4PX 6W
BCS449 M 48EDtW24V OCL50 DMX 6W

¹Other options are available upon request

Rev. 202406

Order Information:

Description
BCS449 M 12LED30K24V OCL30 2PX 3W
BCS449 M 12LED30K24V OCL30 DMX 3W
BCS449 M 12LED30K24V OCL30 3W
BCS449 M 12LED40K24V OCL30 2PX 3W
BCS449 M 12LED40K24V OCL30 DMX 3W
BCS449 M 12LED40K24V OCL30 3W
BCS449 M 12LEDRGB24V OCL30 2PX 3W
BCS449 M 12LEDRGB24V OCL30 DMX 3W
BCS449 M 24EDRGB30K24V OCL30 2PX 3W
BCS449 M 24EDRGB30K24V OCL30 DMX 3W
BCS449 M 24EDRGB40K24V OCL30 2PX 3W
BCS449 M 24EDRGB40K24V OCL30 DMX 3W
BCS449 M 24EDtW24V OCL30 2PX 3W
BCS449 M 24EDtW24V OCL30 DMX 3W

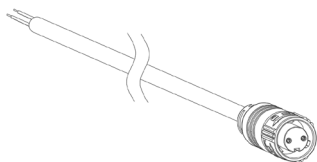
¹Other options are available upon request

Accessories:

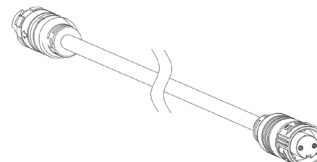
Description
ZXP390 Lead 2P DC cable 2m (10 pcs)
ZXP390 Jump 2P DC cable 2m (10 pcs)
ZXP390 Lead 5P DC/DMX cable 2m (10 pcs)
ZXP390 Jump 5P DC/DMX cable 2m (10 pcs)
ZXP390 Y-connect kit 5P DC/DMX (10 pcs)
ZXP390 Jump 5P DMX connector (10 pcs)
ZXP390 endcap male connector (20 pcs)
ZXP390 endcap female connector (20 pcs)

¹ Different cables lengths are available upon request

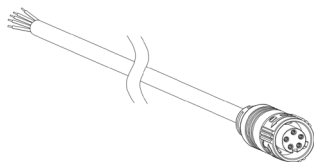
² End caps must be used at the end of each run



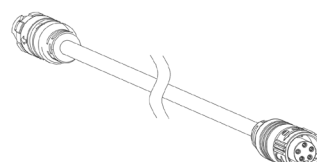
Leader cable 2P DC 2m



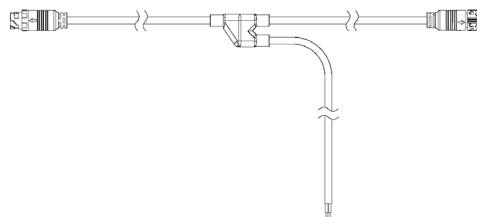
Jumper cable 2P DC 2m



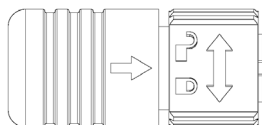
Leader cable 5P DC/DMX 2m



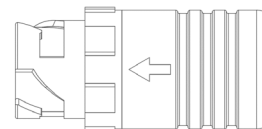
Jumper cable 5P DC/DMX 2m



Y-connector kit 5P DC/DMX



Endcap for male connectors



Endcap for female connectors

Rated System Lumen Output ($\pm 10\%$):

CCT/Color (All channels On)	L30	L50	L100
	DMX	DMX	DMX
3000K	85	170	340
4000K	90	180	360
RGB	25	50	100
RGB30K	60	120	240
RGB40K	60	125	250
tW	75	150	305

