

LiteMagic Street Gen2

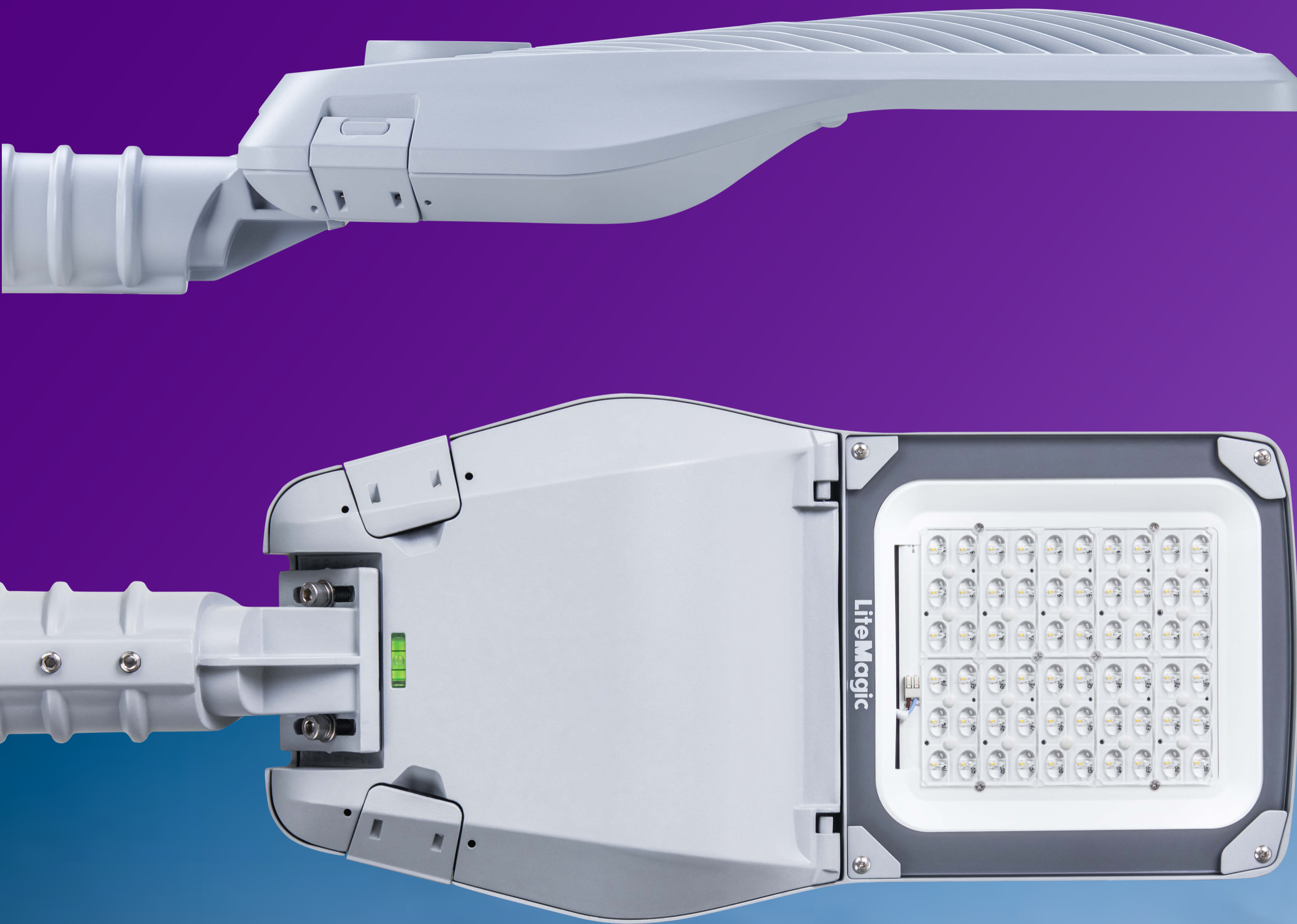
All-rounder for brighter streets

Meet LiteMagic Street Gen2

Municipalities value energy savings more than ever, as energy price hikes put increasing pressure on budgets. Street lighting consumes substantial energy, so large-scale upgrades to energy-efficient LED street lights are essential to cities' cost-saving efforts.

Apart from the luminaire cost, installation and maintenance also play important roles in the total cost for municipalities. Easy and efficient installation and maintenance is welcomed and appreciated.

LiteMagic Street Gen2 luminaires not only look good, they also offer excellent maintenance as well as performance. Future-proof technology combines with high efficacy, and smart connectivity in a light that makes your streets look brighter and better.



Product highlights

Appealing and sustainable design

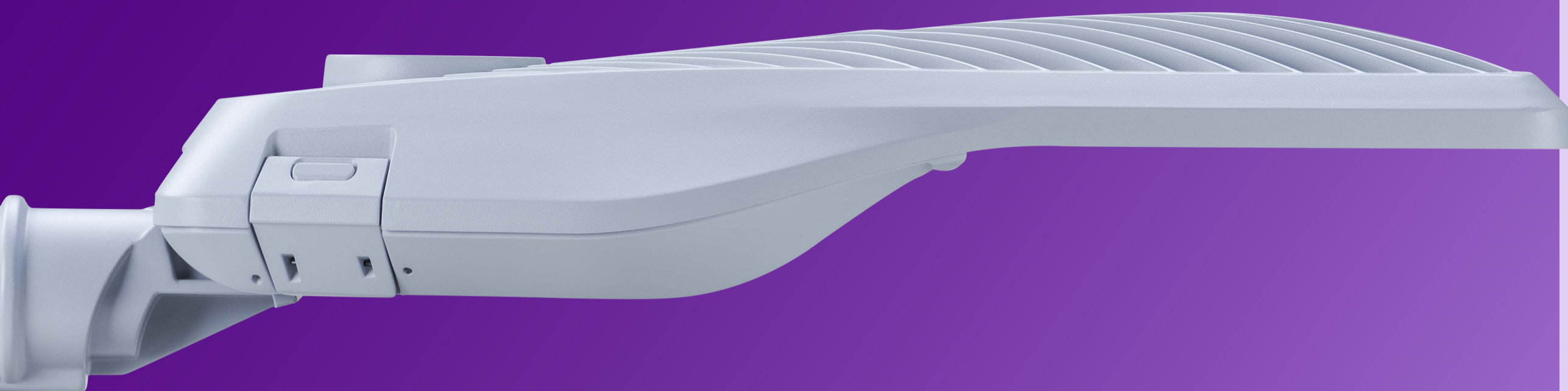
High efficacy



**Easy installation
Easy maintenance**

Connected and system-ready

High durability and reliability



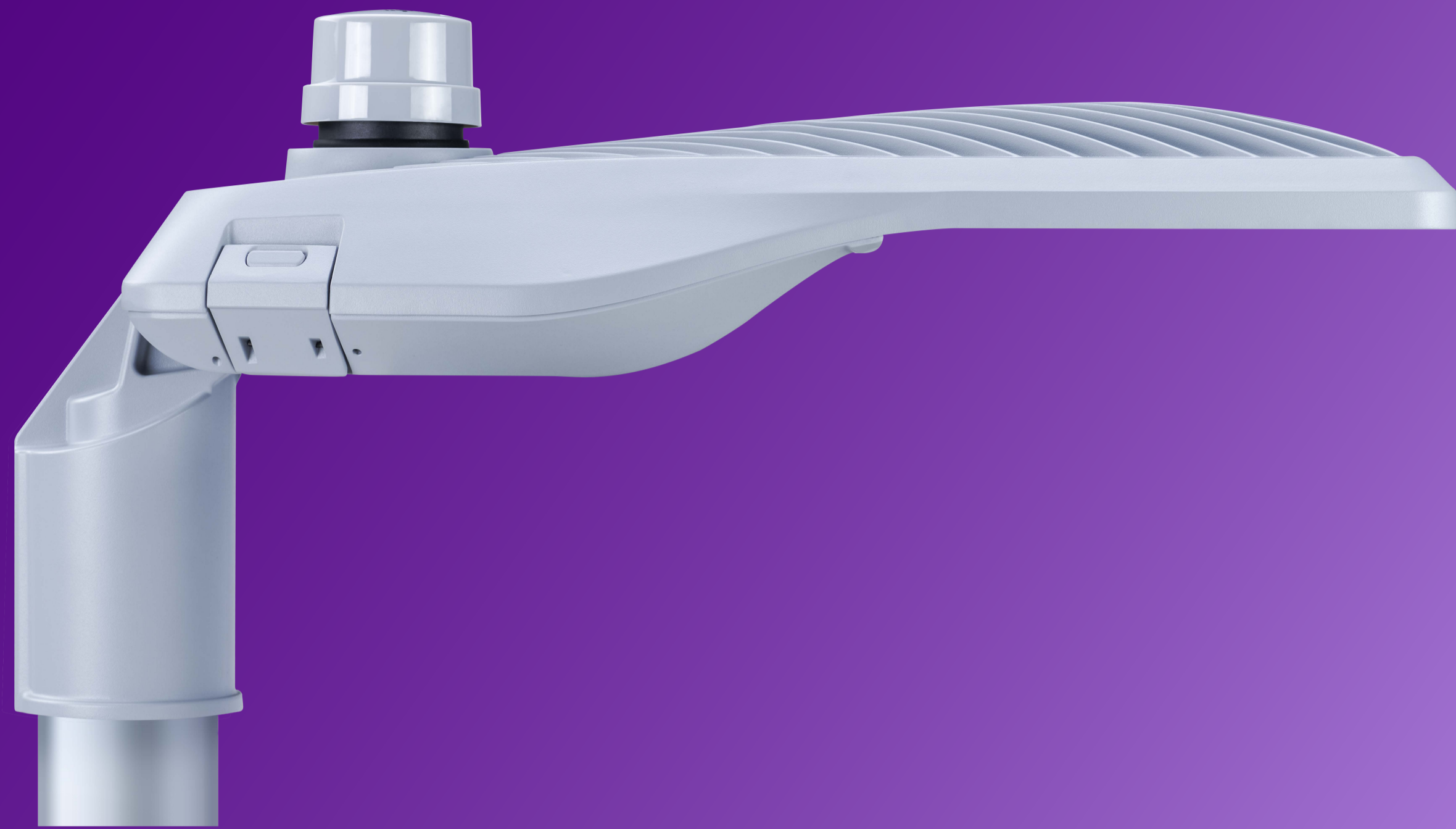
Appealing and sustainable design

- Streamlined figure
- Curved surface with spikes balances premium thermal performance and easy cleaning through the luminaire lifetime

High efficacy

- 150 lm/W (4000 K CCT)
- Increased energy efficiency reduces carbon footprint





Easy installation Easy maintenance

- Two spigot dimension options
- Flexible installation for both side entry and post top
- Adjustable tilting angle
- Tool less open for gear box
- Tool less maintenance for SPD, gear tray, optical cavity*

**socket versions' maintenance require simple tool, say screwdriver*

Connected and system-ready

- NEMA 7-pin socket on top
- SR socket on bottom
- Zhaga-D4i compliant
- Smart and system-ready for energy savings and asset management



Higher durability and reliability

- Product prioritizes safety and quality
- Meets strict 3G vibration test standards
- Wind force test to pass category 5 typhoon
- Unique thermal design (easy-cleaning fins) to make the luminaire operating range up to 50C Ta
- Knife cut to secure safety during installation and maintenance



Product range

Standard configuration options



Small / BRP500 S



Medium / BRP500 M



large / BRP500 L



XLarge / BRP500 XL

System-ready configuration options



Small / BRP500 S P7
(7TS for dual socket)



Medium / BRP500 M P7
(7TS for dual socket)



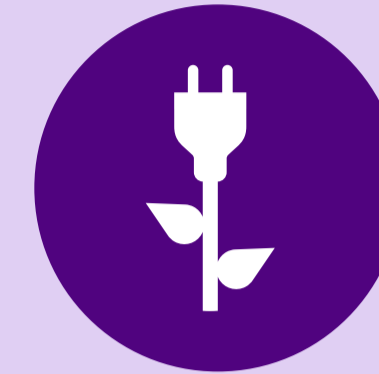
Large / BRP500 L P7
(7TS for dual socket)



XLarge / BRP500 XL P7
(7TS for dual socket)

The street lights your city needs

Key benefits for your city



Optimal energy savings

High efficacy for energy savings and sustainability



Easy to service and maintain

Easy access to SPD, driver, gear, and optical compartment. Hassle-free installation with flexible spigot design



Reliable

Quality components combined with durable design



Future-proof and connected

Interact Ready. Can be paired with IoT systems and lighting applications

Application areas



Lighting for residential and connecting roads



Lighting for urban roads and parking lots



Uniform expressway lighting



Lighting for suburban roads and pathways

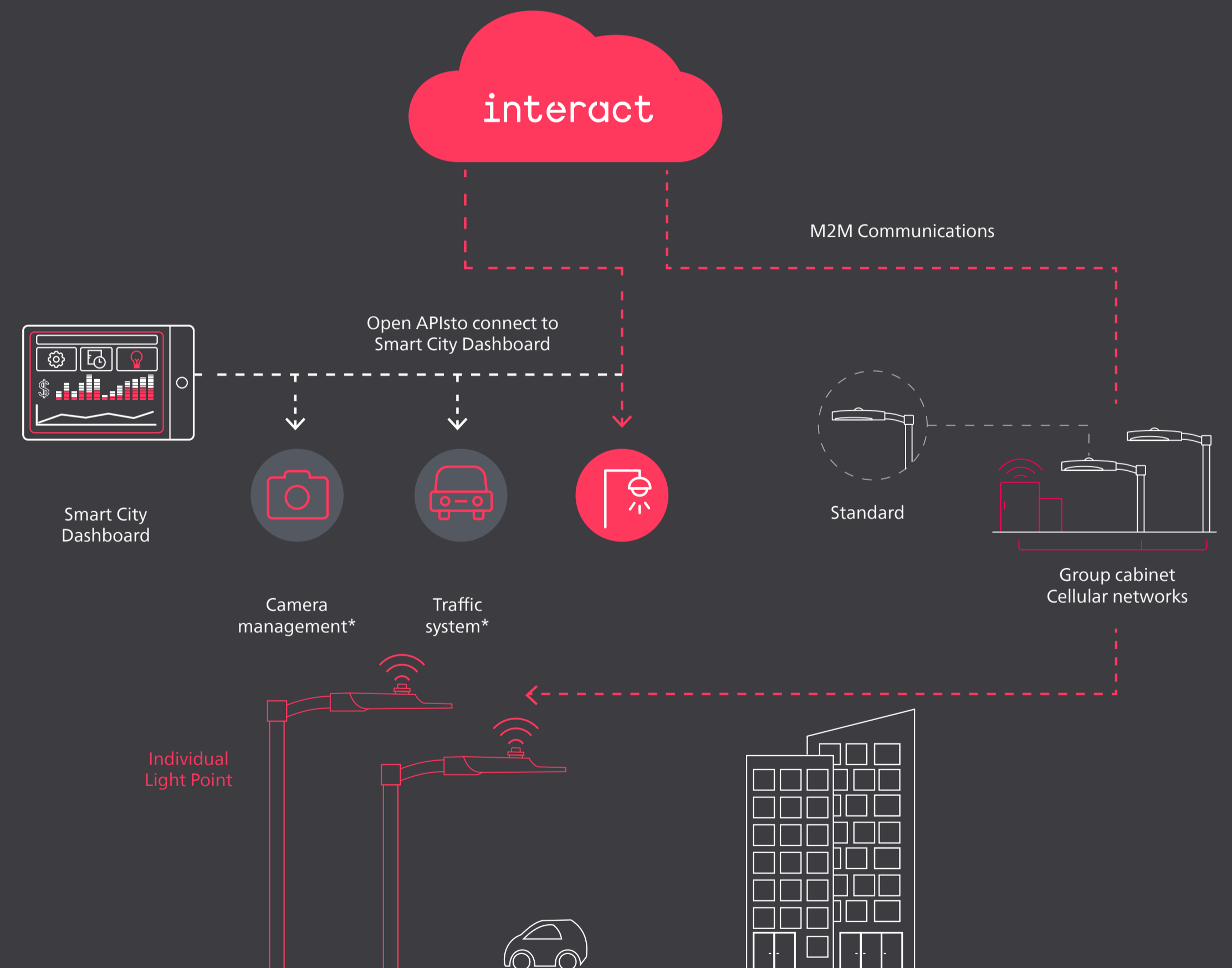


Connect to Interact

Interact turns your street lighting into a connected network capable of hosting sensors and other IoT-enabled devices. It allows you to tap into a wide range of lighting and non-lighting benefits such as scheduling, presence detection, noise monitoring, and incident detection.

LiteMagic Gen2 is ready to be connected to Interact. Simply twist the LiteMagic outdoor lighting control node in the Zhaga system-ready socket on top.

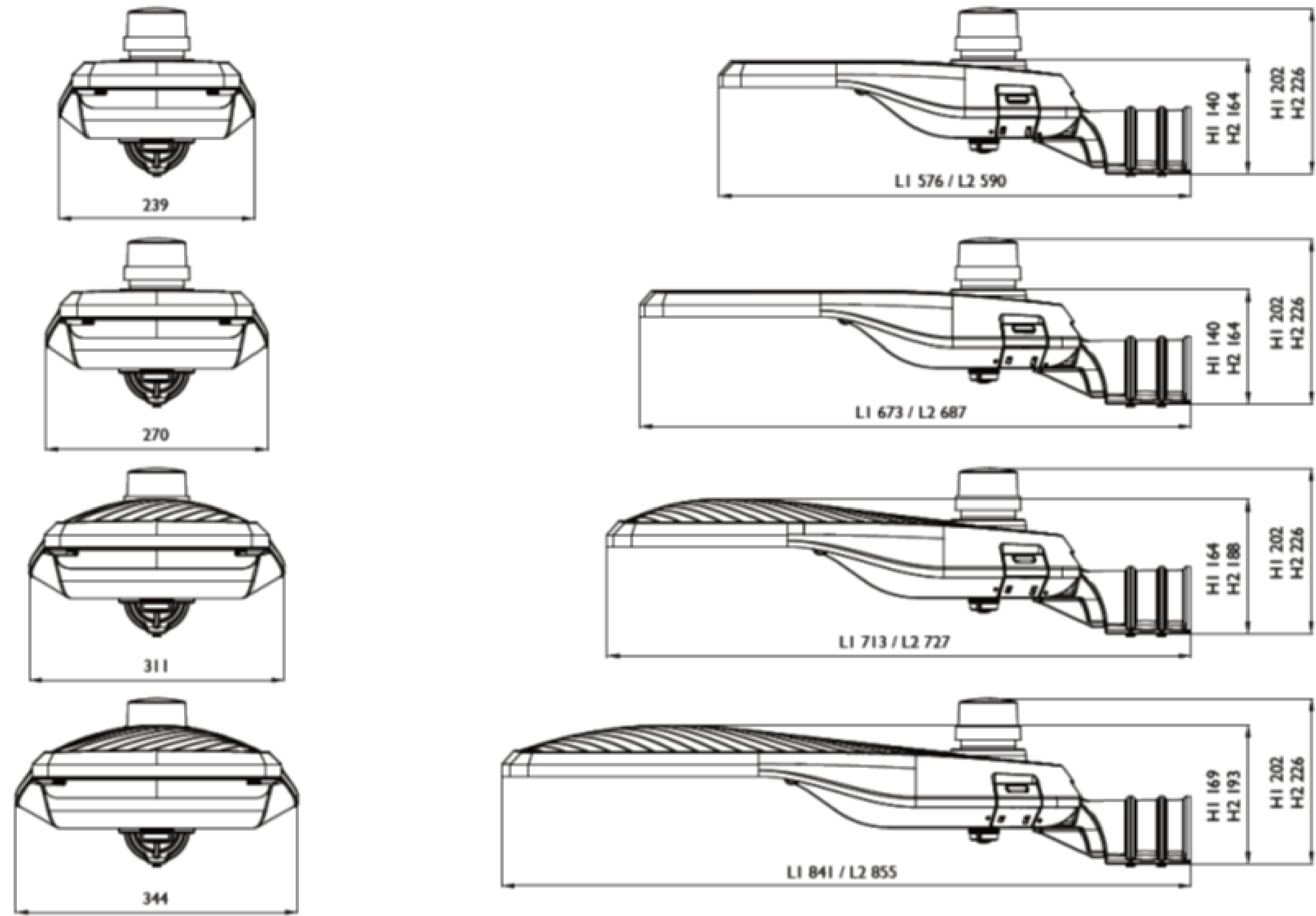
Note: manual database upload is required.



For more information about Interact visit:
www.interact-lighting.com/city

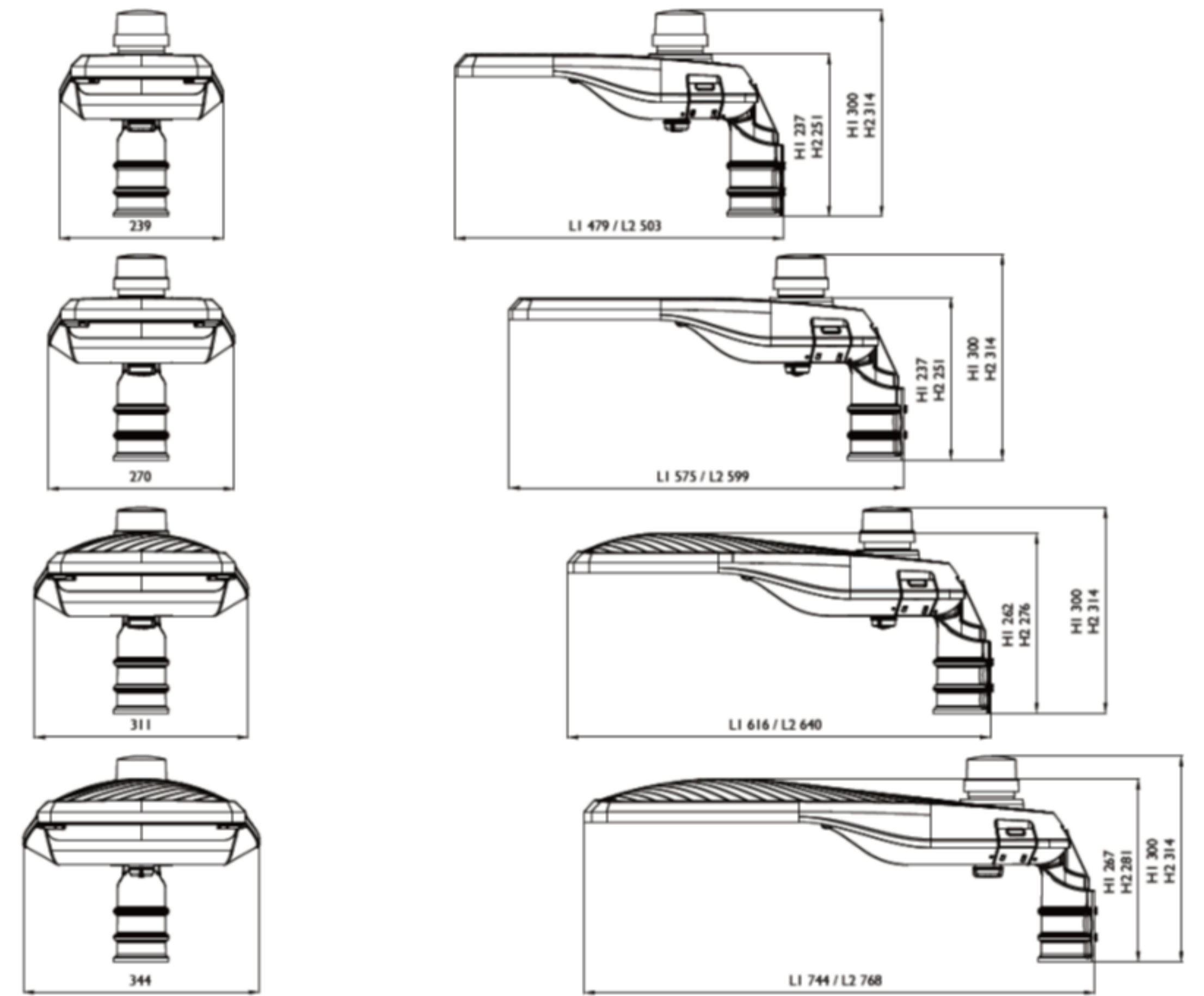
Dimensional drawings

Side entry



L1 & H1: Luminaire with D60 spigot
L2 & H2: Luminaire with D76 spigot

Post top



L1 & H1: Luminaire with D60 spigot
L2 & H2: Luminaire with D76 spigot

Choice sheet

Specifications

Product family	Product code	Housing	LED	CCT	Insulation	Lighting control	Interface
LiteMagic Street Gen2	BRP500	Small - BRP500 S	High Power	Neutral White 4000K	Class I	1-10V	NEMA 7-pin socket
		Medium - BRP500 M		Warm White 3000K		StepDim	SR socket
		Large - BRP500 L		Cool White 5700K		DALI 2.0	
		XLarge - BRP500 XL		2700K, CRI 70		DynaDim	
						Coded Mains	
						SR/D4i	

Specification overview

LiteMagic Street Gen2 BRP500	
LED Type	HP
Flux packages (lm)	up to 33300
CCT/color	3000K / 4000K
Other CCT options	5700K / 2700K
CRI	70 (typ.)
System efficacy (typical@4000K)	150lm/W
Target light distribution	UMV / UWV
Surge Protection device (SPD)	15kV
Protection class IEC	Safety class I
Lifetime	50k hrs L80B10 @50C Outdoor
Operation temperature	- 40°C < Ta < 50°C
IP	IP66
IK	IK08
Mounting	Side entry (48~60mm), Post Top (60~76mm), adj. tilting
Material	Die-casting Aluminum and Front Glass
Maintenance	Toolless open for Gear Box Toolless maintenance for SPD / Gear tray / Optical cavity
Control interface	Analog (1-10V), StepDim, DALI, SR
System interface	NEMA 7-pin socket at top / ZD4i SR socket at bottom
Approbation	CB / CE / ZD4i

Ordering codes

Code	Description
911401675508	BRP500 LED69/NW 45W UMV PSRD HP 6
911401674908	BRP500 LED125/NW 80W UMV PSRD HP 6
911401675008	BRP500 LED229/NW 150W UMV PSRD HP 6
911401675108	BRP500 LED333/NW 220W UMV PSRD HP 6
911401695108	BRP500 LED67/NW 45W UWV PSRD HP 6
911401695208	BRP500 LED122/NW 80W UWV PSRD HP 6
911401695308	BRP500 LED223/NW 150W UWV PSRD HP 6
911401695408	BRP500 LED323/NW 220W UWV PSRD HP 6
911401695908	BRP500 LED121/WW 80W UMV PSD HP 6
911401695008	BRP500 LED69/NW 45W UMV PSD P7 HP 6
911401675208	BRP500 LED125/NW 80W UMV PSD P7 HP 6
911401675308	BRP500 LED229/NW 150W UMV PSD P7 HP 6
911401675408	BRP500 LED333/NW 220W UMV PSD P7 HP 6
911401696008	BRP500 LED215/WW 150W UWV PSD HP 6
911401695508	BRP500 LED66/NW 45W UWV PSD P7 HP 6
911401695608	BRP500 LED122/NW 80W UWV PSD P7 HP 6
911401695708	BRP500 LED223/NW 150W UWV PSD P7 HP 6
911401695808	BRP500 LED322/NW 220W UWV PSD P7 HP 6